

## Adelaide, 33-37 Wright Street

### Premium Space Adjacent to Chinatown & Central Market

LJ Hooker Commercial Adelaide are proud to present to the market, 33-37 Wright Street, Adelaide for lease.

The property offers a fantastic opportunity to occupy a prime corner tenancy within close proximity to Gouger Street. Be immersed within the vibrant amenities of the gouger cafe scene, China town, law courts and the green open spaces of Victoria Square and Whitmore Square.

Key Features include:

- \* 227\* square metres of rare Central Market precinct space
- \* Former bar which could serve as a reception area
- \* Internal kitchen and bathroom facilities
- \* Would suit professional services with private offices, open plan and option of a

**LJ Hooker Commercial**

**Disclaimer:** All information contained therein is gathered from relevant third parties sources. We cannot guarantee or give any warranty about the information provided. Interested parties must rely solely on their own enquiries.

**For Lease**  
Contact Agent

**Building Area**  
227sqm

**Contact**  
**Mark Tettis**  
0433 139 892  
[mark.tettis@ljhcommercialadelaide.com.au](mailto:mark.tettis@ljhcommercialadelaide.com.au)

**Adelaide**  
**(08) 8232 8844**

boardroom

- \* Metres to the court district
- \* Great corner exposure and branding opportunity
- \* Fantastic neighbourhood amenity
- \* Excellent foot traffic
- \* Parking stations close by

For further information or to arrange an inspection please contact either Mark Tettis 0433 139 892 or Jo Chapley 0403 056 889.

RLA 231 015

\* approx

\*\* All information provided has been obtained from sources we believe to be accurate, however, we cannot guarantee the information is accurate and we accept no liability for any errors or omissions (including but not limited to a property's land size, floor plans and size, building age and condition). Interested parties should make their own enquiries and obtain their own legal advice.

## More About this Property

Property ID	8E6H94
Property Type	Offices
Building Area	227 m2

### Mark Tettis 0433 139 892

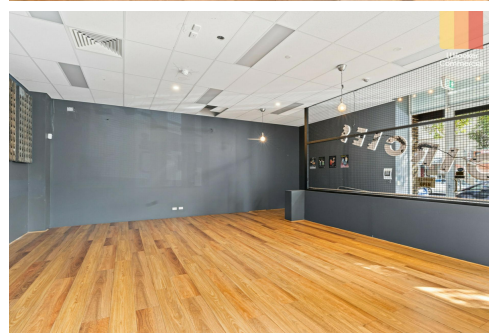
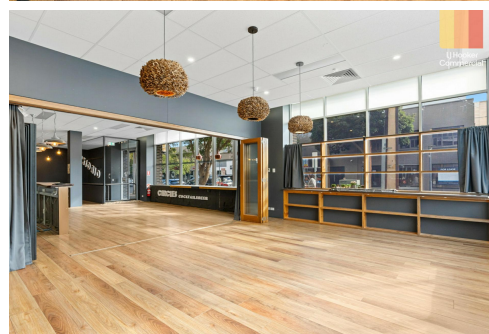
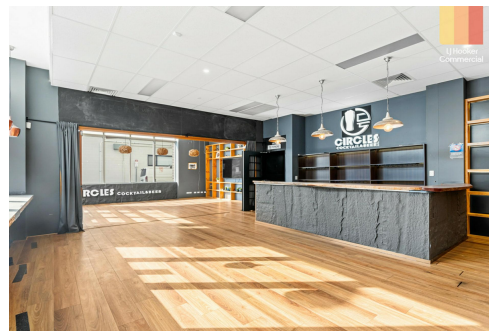
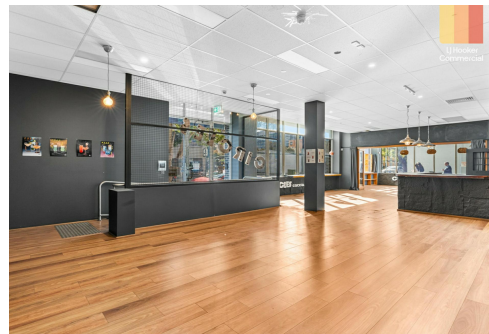
Sales & Leasing - Commercial | [mark.tettis@ljhcommercialadelaide.com.au](mailto:mark.tettis@ljhcommercialadelaide.com.au)

### Adelaide (08) 8232 8844

81 Flinders Street, ADELAIDE SA 5000

[adelaide.ljhcommercial.com.au](mailto:adelaide.ljhcommercial.com.au) |

[commercialadelaide@ljhcommercialadelaide.com.au](mailto:commercialadelaide@ljhcommercialadelaide.com.au)





 **Total Lettable Area - 220m<sup>2</sup>**  
Measurements are approximate



 **LJ Hooker  
Commercial**  
Adelaide

**33-37 Wright Street, Adelaide, SA 5000**

**Disclaimer:** The information & figures obtained within this document has been compiled from information provided by vendor & sources that we believe are reliable. No warranty is given to their accuracy & all figures are subject to change without notice.

 **LJ Hooker Commercial**

**Adelaide**  
**(08) 8232 8844**

**Disclaimer:** All information contained therein is gathered from relevant third parties sources. We cannot guarantee or give any warranty about the information provided. Interested parties must rely solely on their own enquiries.