

122 Frome Street, Adelaide

Quality Ground Floor CBD Office

LJ Hooker Commercial Adelaide are pleased to present 122 Frome Street, Adelaide to the market for Lease.

Offering a modern open plan workspace in the CBD core, with convenient access to a range of cafés, restaurants and retail precincts, the property provides a fantastic opportunity to secure yourself in quality office accommodation.

Key features:

- Total tenancy area 140 sqm*
- Modern office space with great natural light
- Ground floor tenancy with shared amenities
- Accessible and convenient CBD location
- On and off street parking available
- Meeting rooms available to hire

For further information or to organise an inspection please contact Kofi Adih on 0414 834 151 or Mark Tettis on 0433 139 892.

RLA 231 015

- approximate

FOR LEASE
Contact Agent

BUILDING AREA
140sqm

AGENTS

Kofi Adih
0414 834 151
kofi.adih@ljhcommercialadelaide.com.au

Mark Tettis
0433 139 892
mark.tettis@ljhcommercialadelaide.com.au

AGENCY

Adelaide
(08) 8232 8844

All information contained therein is gathered from relevant third parties sources. We cannot guarantee or give any warranty about the information provided. Interested parties must rely solely on their own enquiries.

 **LJ Hooker Commercial**

- * All information provided has been obtained from sources we believe to be accurate, however, we cannot guarantee the information is accurate and we accept no liability for any errors or omissions (including but not limited to a property's land size, floor plans and size, building age and condition). Interested parties should make their own enquiries and obtain their own legal advice.

MORE DETAILS

Property ID 8H7H94
Property Type Offices
Medical/Consulting
Other
Building Area 140 m2

Kofi Adih 0414 834 151

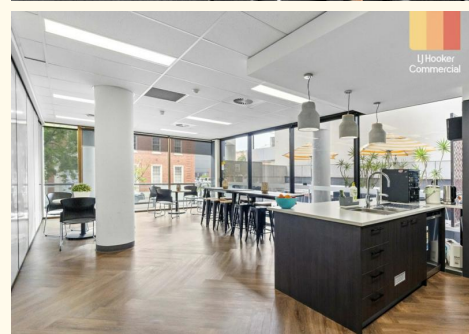
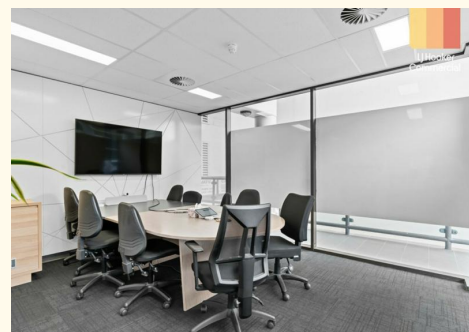
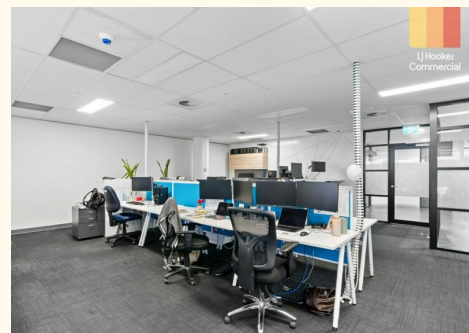
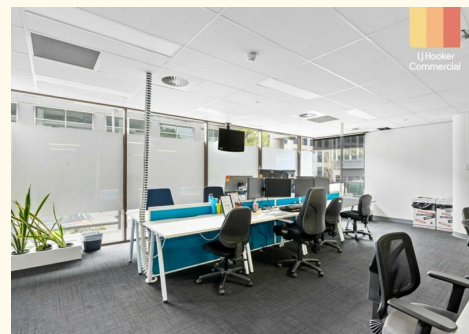
Commercial Sales Consultant |
kofi.adih@ljhcommercialadelaide.com.au

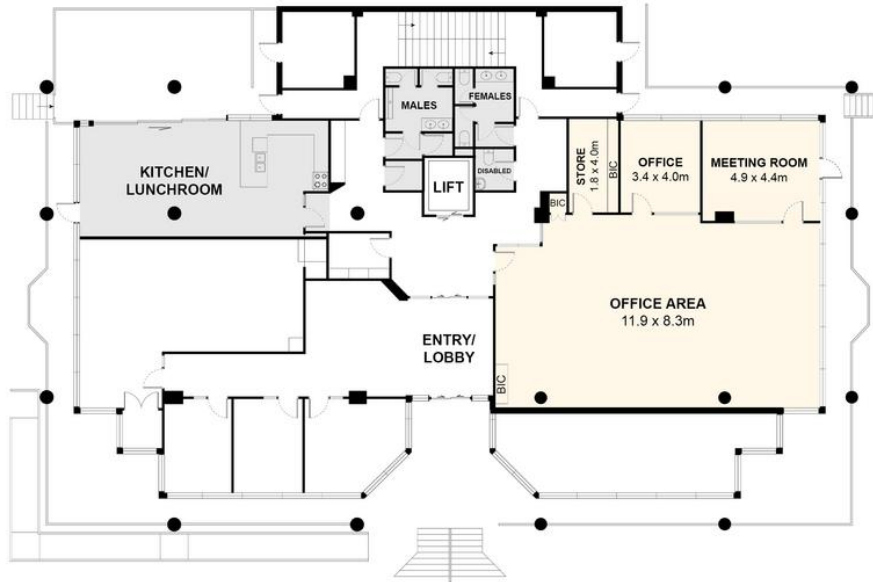
Mark Tettis 0433 139 892

Director - Commercial Sales & Leasing |
mark.tettis@ljhcommercialadelaide.com.au

Adelaide (08) 8232 8844

81 Flinders Street, ADELAIDE SA 5000
adelaide.ljhcommercial.com.au |
commercialadelaide@ljhcommercialadelaide.com.au





- NET LETTABLE AREA - 140m²
- Common Area/Amenities - 75m²

Measurements are approximate



122 Frome Street, Adelaide, SA 5000

Disclaimer: The information & figures obtained within this document has been compiled from information provided by vendor & sources that we believe are reliable. No warranty is given to their accuracy & all figures are subject to change without notice.