

Adelaide, Room 8/60 Hutt Street

PRIME MEDICAL/ OFFICE OPPORTUNITY IN HIGH PROFILE LOCATION

Located in the heart of the health and medical precinct, 60 Hutt Street, is an established, premises featuring old world charm and character. A rare opportunity exists for you to establish your business in a prominent location on Hutt Street, the epicentre of the south-east precinct between Flinders and Wakefield Streets. Bray House benefits from the strength of being anchored by the tenant mix of "Hutt Street General Practice", "Australian Clinical Labs Pathology", Psychologist & Physiotherapist.

- Commanding high profile gateway location.
- 65 sqm available of prime ground floor area.
- Well presented rooms.
- Kitchen facilities.
- Airconditioning.
- Ample on street carparking.



For Lease
Contact Agent

Building Area
65sqm

Contact
Ralph Pacillo
0433 117 801
ralph@ljhfp.com.au

LJ Hooker Flinders Park
(08) 8352 1155

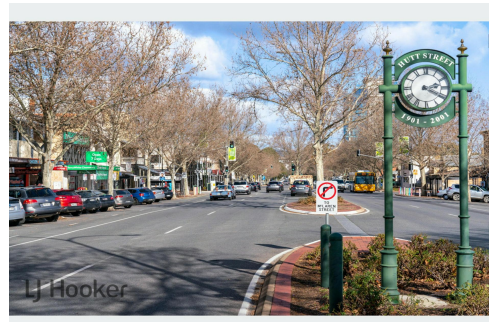
Disclaimer: All information contained therein is gathered from relevant third parties sources. We cannot guarantee or give any warranty about the information provided. Interested parties must rely solely on their own enquiries.

- Public Transport is at your doorstep.
- Available 1 September 2024.

Situated within the tree lined Hutt Street, with it's historical village charm and exciting variety of commercial, dining and social experiences, Hutt Street is the pride of its growing community and a popular destination. This property represents an unprecedented opportunity for Medical and allied practitioners.

RLA 215339

Ralph Pacillo - 0433 117 801 rpacillo@ljhfp.com.au



More About this Property

Property ID	EATH67
Property Type	Medical/Consulting
Building Area	65 m ²

Ralph Pacillo 0433 117 801

Licensee | ralph@ljhfp.com.au

LJ Hooker Flinders Park (08) 8352 1155

240 Grange Road, FLINDERS PARK SA 5025

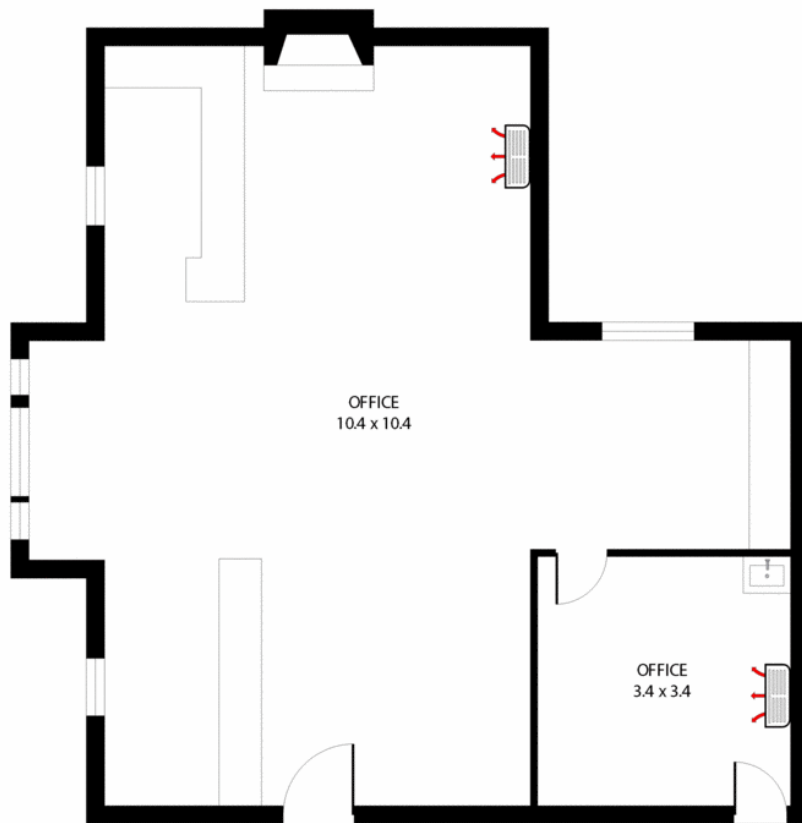
flinderspark.ljhooker.com.au | flinderspark@ljhfp.com.au



LJ Hooker Flinders Park
(08) 8352 1155

Disclaimer: All information contained therein is gathered from relevant third parties sources.

We cannot guarantee or give any warranty about the information provided. Interested parties must rely solely on their own enquiries.



86m²

TOTAL

Whilst every attempt has been made to ensure the accuracy of the floor plan contained here, measurements of doors, windows, rooms and any other items are approximate and no responsibility is taken for any error, omission, or misstatement. This plan is for illustrative purposes only and should be used as such by any prospective purchaser.

 PICTURE IT SOLD