

Adamstown, 1/562 Glebe Road

HIGH EXPOSURE!

- Prime Commercial Office Space
- Open Floor plan approx 54m2
- Conveniently located to Westfield Shopping Centre and Inner city Bypass
- Private Amenities
- Exceptional Business opportunity
- Front and rear access
- Air-conditioning

For Lease

\$24,000 + GST pa

Building Area

54sqm

Contact

Paul Campbell

0417 678 593

pcampbell.admiral@ljh.com.au



LJ Hooker Warners Bay
(02) 4915 3800

Disclaimer: All information contained therein is gathered from relevant third parties sources. We cannot guarantee or give any warranty about the information provided. Interested parties must rely solely on their own enquiries.

More About this Property

Property ID	YR5HN8
Property Type	Offices
Building Area	54 m2

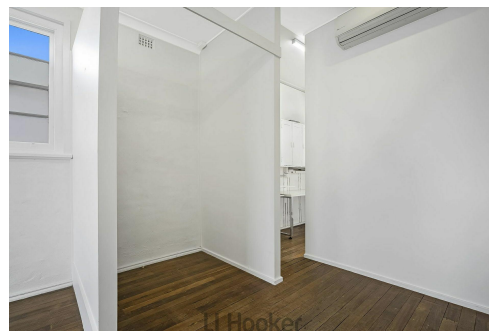
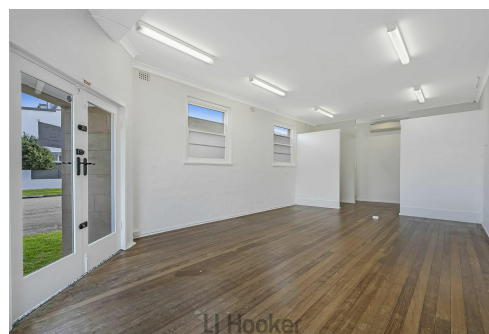
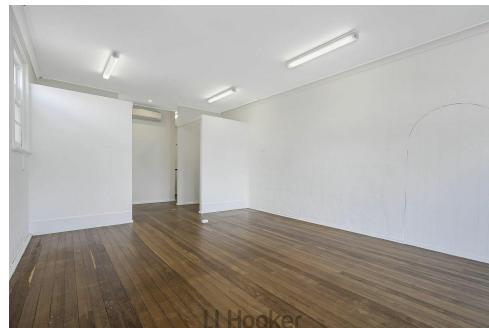
Paul Campbell 0417 678 593

Chairman of the Board | pcampbell.admiral@ljh.com.au

LJ Hooker Warners Bay (02) 4915 3800

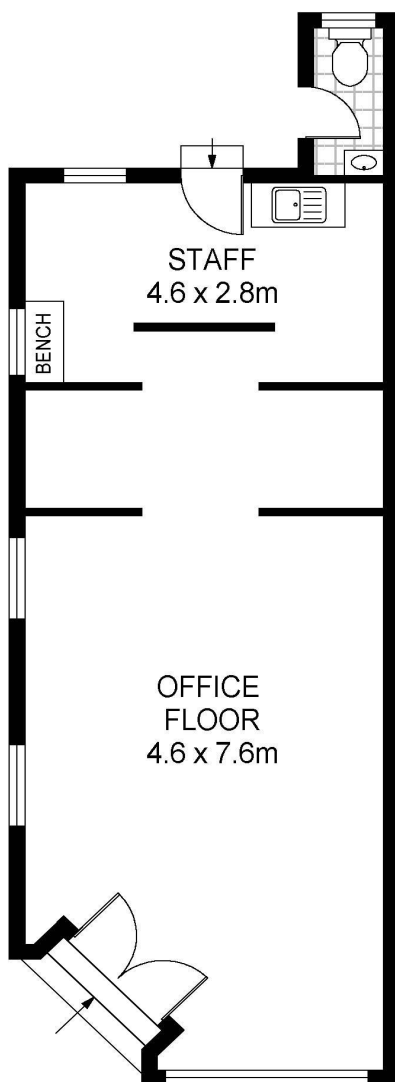
Shop 12, 240-260 Hillsborough Rd, WARNERS BAY NSW 2282

warnersbay.ljhooker.com.au | warnersbay@ljhooker.com.au



Disclaimer: All information contained therein is gathered from relevant third parties sources.
We cannot guarantee or give any warranty about the information provided. Interested parties must rely solely on their own enquiries.

**LJ Hooker Warners Bay
(02) 4915 3800**



1/562 Glebe Road
Adamstown

0 1 2 3 4 5
Total Internal Floor Area: 54 sqm

Scale in metres. Indicative only. Dimensions are approximate. All information contained herein is gathered from sources we believe to be reliable. However we cannot guarantee its accuracy and interested persons should rely on their own enquiries



LJ Hooker Warners Bay
(02) 4915 3800

Disclaimer: All information contained therein is gathered from relevant third parties sources.
We cannot guarantee or give any warranty about the information provided. Interested parties must rely solely on their own enquiries.